

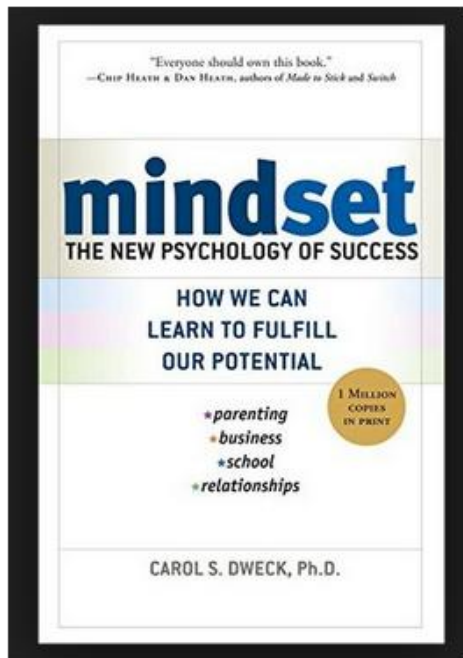
Dear incoming student of IB Psychology,

Welcome! You are about to embark upon a wonderful journey, that of IB Psychology.

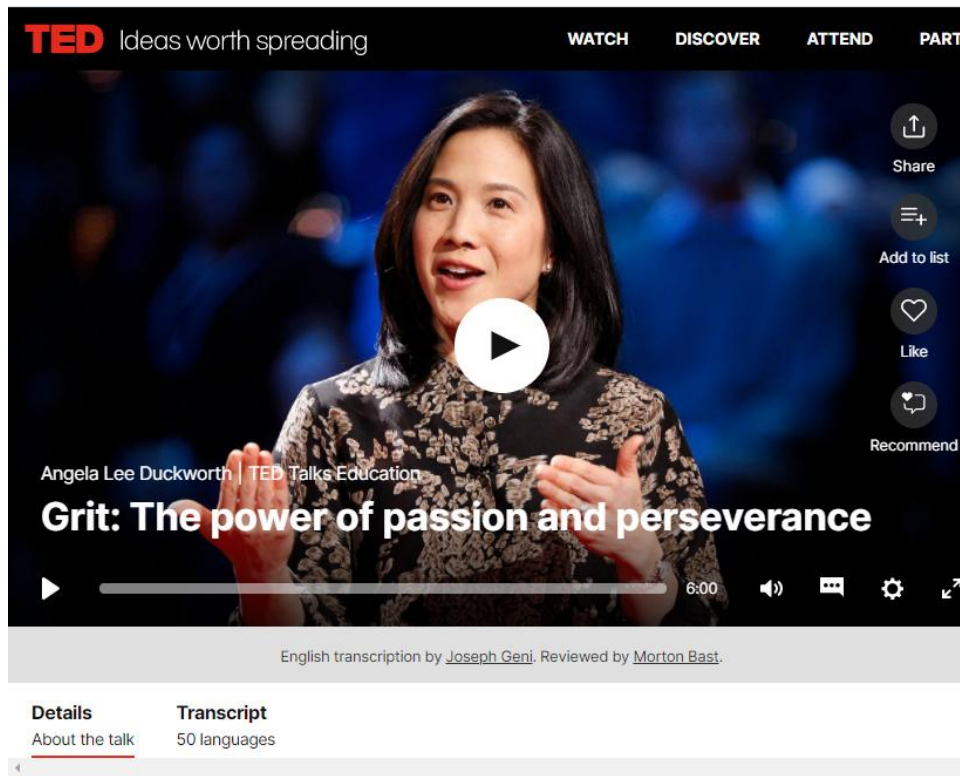
Psychology is the systematic and scientific study of human behavior and mental processes. It is a fascinating subject, highly academic and all the while practical, as it relates closely to our daily lives. To come into the IB Psychology class in **September** fully prepared, you will need to complete the following 3 assignments during the summer:

1. Throughout the duration of the course we will be looking closely at highly influential psychological theories and examining research studies which help provide support for these theories. This 1st assignment is related to one such influential theory. Please read the following “thought-book” which you may access through our own **ACS Athens Libraries** via this link: <https://drive.google.com/file/d/1gvQS-7V4ib-kP02L6MMpJi-JNgm9gr7w>. Since it's in .epub, a preview is not possible; so you will need to download it, and then read it through an app. *Suggestions/directions on how to do that,* here: <https://moodle.acs.gr/course/view.php?id=260§ion=3>.

You don't have to read further than **page 107** (but you are more than welcome to read it all, if you want to). Prepare a short (150-250 words) **reflection** of your take-aways from the book. *What is it that stood out the most to you? What made an impression? How can the book title be explained? To what extent do you think this is a good theory? Any other thoughts you may want to share...*



2. Listen to Angela Lee Duckworth's TED Talk - [HERE](#). Then go ahead and share another brief response (no more than 150 words) on the following question: how does this TED Talk relate to the previously mentioned theory by Dweck?



Leaving a high-flying job in consulting, Angela Lee Duckworth took a job teaching math to seventh graders in a New York public school. She quickly realized that IQ wasn't the only thing separating the successful students from those who struggled. Here, she explains her theory of "grit" as a predictor of success.

23,628,390
views

TED Talks Education |
April 2013

3. IB Psych course supplies: this is an easy assignment! You just need to get ready for class before the 1st day of school ☺

SUPPLIES:

- Big notebook (3 dividers: reading and class notes/ vocabulary, definitions/ quiz scores and reading reflections)
- 3 A4 plastic envelopes to keep assessments (test/quizzes) and feedback: one for Paper 1, one for Paper 2 and one for Paper 3 (Research Methods)
- 1 big binder for research templates (4 dividers: SCA/ CA/ BA/ HR)

Assignments #1-3 are due on **the 1st day of school** and will count as completion assignments towards your 1st Qt. average. If you do not have the assignments completed on the first day of school, they will be due within the first 2 weeks of school and will only count for ½ credit. Submissions should be made (as a single attachment document) to both Ms Coklas (coklas@acs.gr) and Ms Chamosfakidis (chamosfakidis@acs.gr)

Have a safe and joyful summer ☺